



Cisco 805 Series Router Cabling and Setup Quick Start Guide

This document describes the basic process of cabling and configuring the Internet access device, the Cisco 805 router. For advanced cabling information, refer to the *Cisco 805 Router Hardware Installation Guide*. For advanced configuration information, refer to the *Cisco 805 Router Software Configuration Guide*. These documents are available on the Cisco Documentation CD-ROM and on the World Wide Web.

You can access the most current Cisco documentation on the World Wide Web at the following sites:

- <http://www.cisco.com>
- <http://www-china.cisco.com>
- <http://www-europe.cisco.com>

Parts List

The shipment of your Cisco 805 router includes the following items:

- One Cisco 805 router
- One yellow Ethernet cable
- One black power supply
- One black power supply cord
- 800 and SOHO Series Product Documentation CD
- Cisco 805 Fast Step CD-ROM

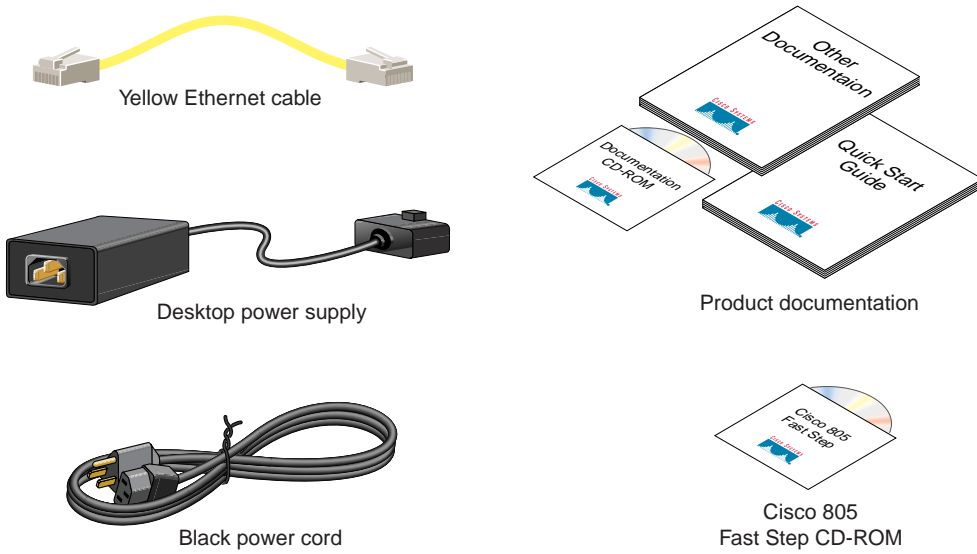
[Figure 1](#) shows the items included with the router. If any of the items is missing or damaged, contact your customer service representative.



Corporate Headquarters:
Cisco Systems, Inc., 170 West Tasman Drive, San Jose, CA 95134-1706 USA

Copyright © 2001. Cisco Systems, Inc. All rights reserved.

Figure 1 *Items Included with the Router*



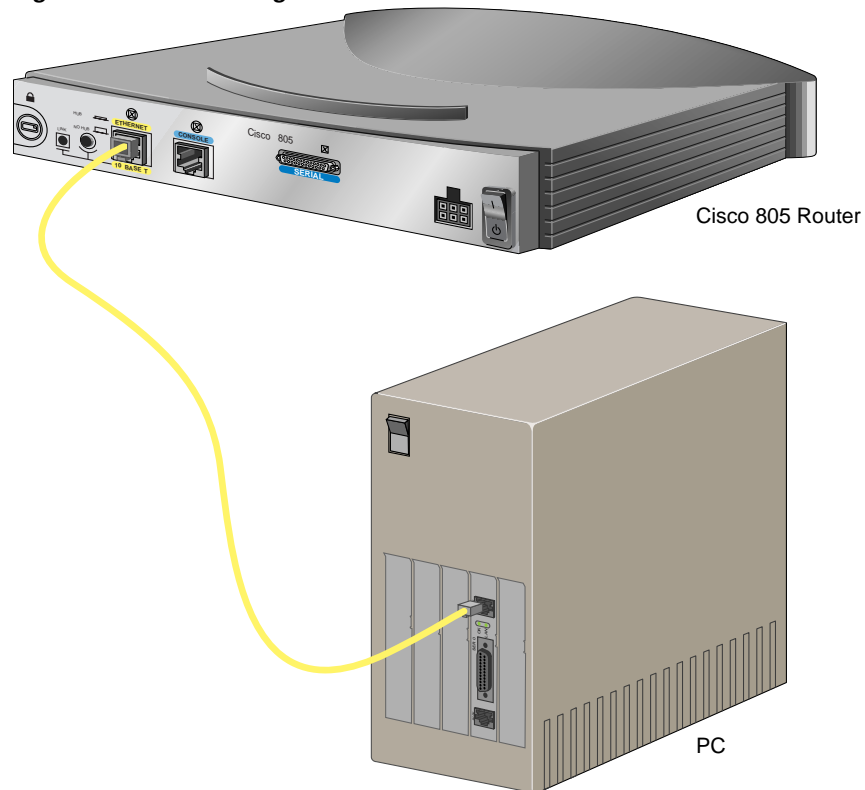
Verify the PC Setup

Before you begin, verify that each computer that will be connected to the router has a network interface card (NIC) installed and that Transmission Control Protocol/Internet Protocol (TCP/IP) has been loaded and configured. For more information on how to configure TCP/IP, refer to the *PC Configuration Instructions to Establish Cisco Router-to-PC Communications*, which is available on the Cisco Documentation CD-ROM, and refer to information available the Microsoft web site.

Connect the Cisco 800 Series Router to a PC

Follow these steps to connect the Cisco 805 router to a PC with a 10- or 10/100-Mbps network interface card (NIC):

Figure 2 Connecting a Cisco 805 Router to a PC

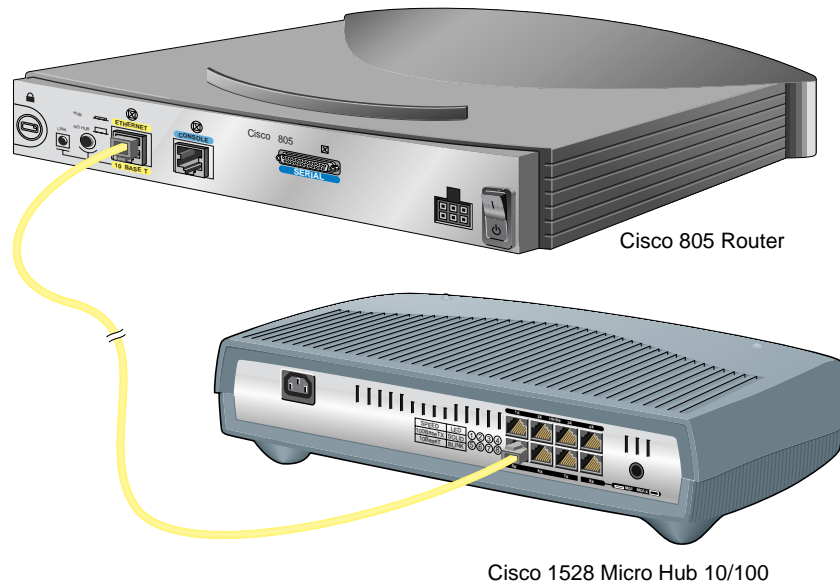


-
- Step 1** Connect the yellow Ethernet cable from the yellow Ethernet port on the back panel of the router to the Ethernet port on the NIC on the computer.
- Step 2** Verify that the HUB/NO HUB switch on the left side of the back panel has been set to the NO HUB position (out). If the button is in, press it to set it to the out position.
-

Connect the Cisco 800 Series Router to a Hub

Follow these steps to connect the Cisco 805 router to a hub:

Figure 3 Connecting a Cisco 805 Router to a Hub



-
- Step 1** Connect the yellow Ethernet cable from the yellow Ethernet port on the back panel of the router to the Ethernet port on the hub.
- Step 2** Verify that the HUB/NO HUB switch on the left side of the back panel has been set to the HUB position (in). If the button is out, press it to set it to the in position.
-

Connect the Cisco 805 Router to a Serial Device

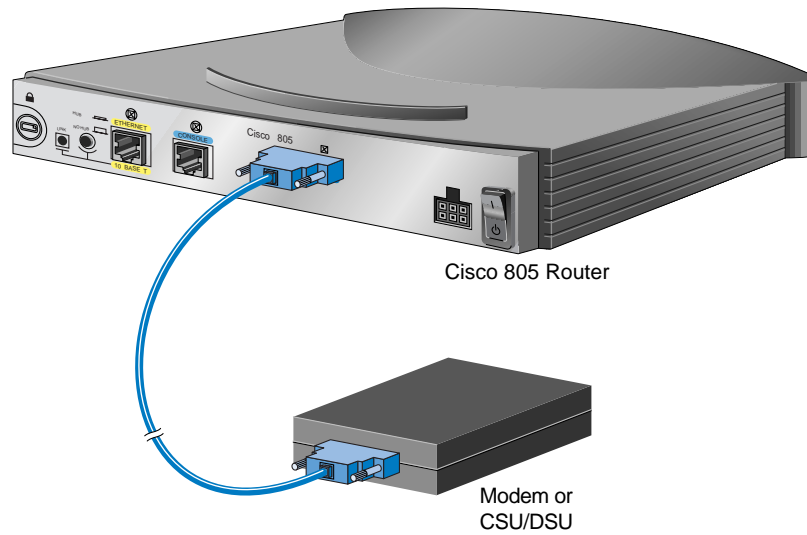
The following table describes the devices most commonly connected to the router serial port and how the serial line is used.

Serial Device	WAN Options	WAN Encapsulation (Framing)	Network Type
Asynchronous modem	Asynchronous dial-up line	Point-to-Point Protocol (PPP)	Remote office to corporate office Small office to Internet service provider (ISP)
Channel service unit/data service unit (CSU/DSU)	Synchronous leased line Frame Relay X.25	Synchronous leased line: High-Level Data Link Control (HDLC) or PPP Frame Relay X.25	Remote office to corporate office Small office to ISP

If you need help deciding which serial cable to order, see Appendix A, “Selecting a Serial Cable” in the *Cisco 805 Router Hardware Installation Guide*. Then order one of the serial cables described in the following table.

Mode	Signaling	Gender	Part Number
DCE	EIA/TIA-232	Female	CAB-SS-232FC
DTE	EIA/TIA-232	Male	CAB-SS-232MT
DCE	EIA/TIA-449	Female	CAB-SS-449FC
DTE	EIA/TIA-449	Male	CAB-SS-449MT
DCE	EIA/TIA-530	Female	CAB-SS-530FC
DTE	EIA/TIA-530	Male	CAB-SS-530MT
DCE	EIA/TIA-530A	Female	CAB-SS-530AFC
DTE	EIA/TIA-530A	Male	CAB-SS-530AMT
DCE	X.21	Female	CAB-SS-X21FC
DTE	X.21	Male	CAB-SS-X21MT
DCE	V.35	Female	CAB-SS-V35FC
DTE	V.35	Female	CAB-SS-V35FT
DCE	V.35	Male	CAB-SS-V35MC
DTE	V.35	Male	CAB-SS-V35MT

Figure 4 Connecting a Serial Device to a Cisco 805 Router



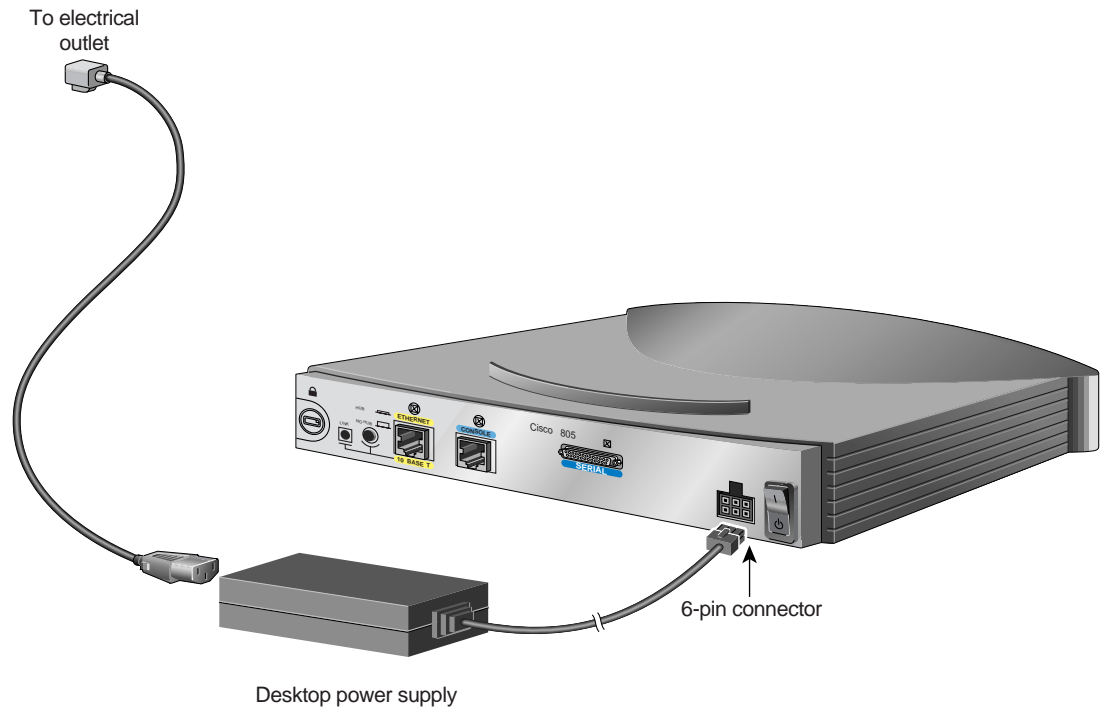
Note In some countries, a modem or CSU/DSU might not be necessary or might be provided by your WAN service provider.



-
- Step 1** Connect the appropriate end of the serial cable to the dark blue serial port on your router.
- Step 2** Connect the other end of the cable to the modem or CSU/DSU.
-

Connect the Power and Turn On the Router

Follow these steps to connect power to the Cisco 805 router and turn it on:

Figure 5 Connecting the Power to an 805 Router

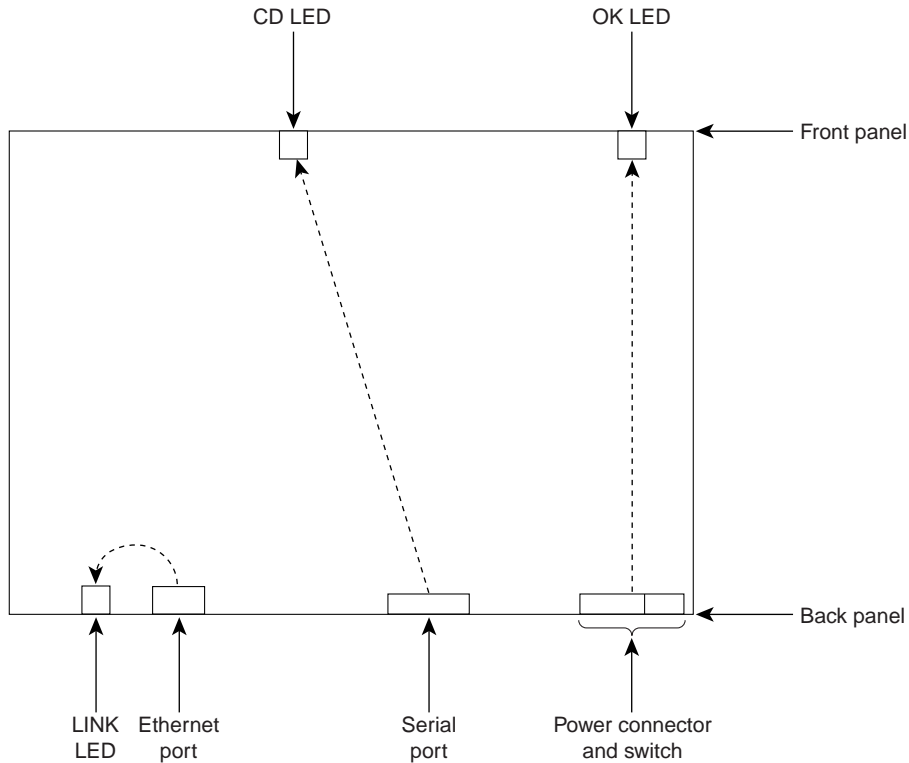


-
- Step 1** Make sure the router power is off. Press the power switch to standby ().
 - Step 2** Connect the power supply cable to the 6-pin connector on the router.
 - Step 3** Connect the power cord to the desktop power supply.
 - Step 4** Connect the other end of the power cord to an electrical outlet.
 - Step 5** Turn ON the router. Press the power switch to on ().
-

Verifying the LEDs

Verify the power, Ethernet, and serial connections by checking the LEDs. Figure 6 shows the components that you must verify and the location of their corresponding LEDs.

Figure 6 Components and Associated LEDs



The following table describes the normal pattern for these LEDs and what to do if you get an abnormal pattern. For more information on all LEDs, see Chapter 1, “Product Overview” of the *Cisco 805 Router Hardware Installation Guide*.

LED	Normal Pattern	Explanation	If Abnormal Pattern
OK	On	Power is supplied to the router.	If off, see Chapter 3, “Troubleshooting” in the <i>Cisco 805 Router Hardware Installation Guide</i> .
LINK	On	Ethernet device is connected.	If off, toggle HUB/NO HUB button (if set to HUB [in], reset to NO HUB [out] or vice versa). ¹ If still off, see Chapter 3, “Troubleshooting” in the <i>Cisco 805 Router Hardware Installation Guide</i> .
CD (Carrier detect)	On	Packets are sent or received from serial port. ²	If off for a long time, see Chapter 3, “Troubleshooting” in the <i>Cisco 805 Router Hardware Installation Guide</i> .

- For information on how the setting of this button on a hub affects the setting of the router HUB/NO HUB button, see Chapter 2, “Installing the Cisco 805 Router” in the *Cisco 805 Router Hardware Installation Guide*.
- The CD LED will not light until you configure the serial interface. For more information on configuring the serial interface, see the *Cisco 805 Router Software Configuration Guide*.

About the Product CD

The 800 and SOHO Series Product Documentation CD contains the technical publications for the 800 and SOHO series routers.

System Requirements

Processor	Pentium 150 MHz or faster recommended
PC OS	Microsoft Windows 95 Microsoft Windows 98 Microsoft Windows 2000 Microsoft Windows NT 4.0
Memory	64-MB DRAM
Drives	4x CD-ROM drive
Monitor	Color monitor capable of 800 x 600 pixel resolution
Software	Netscape 3.0 or later Internet Explorer 3.0 or later Adobe Acrobat Reader 3.0 or later

Documentation Exceptions

This CD does not contain certain publications that were incomplete or unavailable when this CD was produced. These documents are in the 800 and SOHO platform hardware accessory kits and should be consulted before installing and configuring your system. You can also access these documents on the Documentation page on Cisco Connection Online (CCO) at www.cisco.com.

- *Cisco 800 Series Routers Release Notes*
- *Cisco 828 and SOHO 78 Routers Release Notes*
- *IOS Release Notes for the Cisco 800 Series Router*
- *IOS Release Notes for the Cisco 828 Router*
- *Cisco Router Web Setup User Guide*

Using the CD Interface

When the CD is first launched, it automatically opens a browser session and displays the CD interface in the browser window. You can use the list of books in the left pane of your display to navigate directly to the book you want to view. Within the interface, you can use your mouse to:

- Hover over book titles in the left column for an overview of the document before opening a document.
- Select a book title from the document list on the left or from the document drop-down menu on the CD title bar.
- Click the Cisco Systems corporate icon to display Cisco support and service information.
- Click **About This CD** (notepad icon) to get additional information about this CD.
- Click **Send Us Your Feedback!** (pencil & notepad icon) to provide us with your feedback.
- Click **Get Acrobat Reader** to install a free copy of Adobe Acrobat Reader 4.0.

Changing the Display Properties of Documents

When you first launch the CD, you will notice a list of books in the left pane of your display that you can use to navigate directly to the book you want to view. When you select the document, Acrobat Reader opens the book in .pdf format and provides a list of topics in the left frame of the Acrobat window. To disable this option and view the book fully in the window, click the **Show/Hide Navigation Pane** button on the Acrobat toolbar. Note that when hiding bookmarks, the thumbnails, annotations, and articles are also hidden.

Printing Documents

To print a document:

-
- Step 1** Click the **Printer** icon on the Acrobat toolbar.
The Windows Print Dialog box appears.
- Step 2** Select your default printer and click **OK**.
-

Ordering Printed Copies of Documents

You can order printed copies of the documents on this CD and additional copies of this CD on the 800 and SOHO platform product ordering pages on Cisco Connection Online (CCO). Registered CCO users can order documentation for other Cisco products and the Cisco Documentation CD-ROM (containing all Cisco documentation) through our online Subscription Services at <http://www.cisco.com/cgi-bin/subcat/kaojump.cgi>.

Nonregistered CCO users can order documentation through a local account representative by calling Cisco's corporate headquarters (California, USA) at 408 526-4000 or, in North America, by calling 800 553-NETS (6387).

You can access the most current Cisco documentation on the World Wide Web at <http://www.cisco.com>, <http://www-china.cisco.com>, or <http://www-europe.cisco.com>.

AccessPath, AtmDirector, Browse with Me, CCDA, CCDE, CCDP, CCIE, CCNA, CCNP, CCSI, CD-PAC, *CiscoLink*, the Cisco NetWorks logo, the Cisco *Powered* Network logo, Cisco Systems Networking Academy, the Cisco Systems Networking Academy logo, Fast Step, Follow Me Browsing, FormShare, FrameShare, GigaStack, IGX, Internet Quotient, IP/VC, iQ Breakthrough, iQ Expertise, iQ FastTrack, the iQ Logo, iQ Net Readiness Scorecard, MGX, the Networkers logo, *Packet*, RateMUX, ScriptBuilder, ScriptShare, SlideCast, SMARTnet, TransPath, Unity, Voice LAN, Wavelength Router, and WebViewer are trademarks of Cisco Systems, Inc.; Changing the Way We Work, Live, Play, and Learn, Discover All That's Possible, and Empowering the Internet Generation, are service marks of Cisco Systems, Inc.; and Aironet, ASIST, BPX, Catalyst, Cisco, the Cisco Certified Internetwork Expert logo, Cisco IOS, the Cisco IOS logo, Cisco Systems, Cisco Systems Capital, the Cisco Systems logo, Enterprise/Solver, EtherChannel, EtherSwitch, FastHub, FastSwitch, IOS, IP/TV, LightStream, MICA, Network Registrar, PIX, Post-Routing, Pre-Routing, Registrar, StrataView Plus, Stratm, SwitchProbe, TeleRouter, and VCO are registered trademarks of Cisco Systems, Inc. and/or its affiliates in the U.S. and certain other countries.

All other brands, names, or trademarks mentioned in this document or Web site are the property of their respective owners. The use of the word partner does not imply a partnership relationship between Cisco and any other company. (0104R)

Copyright © 2001, Cisco Systems, Inc.
All rights reserved.

